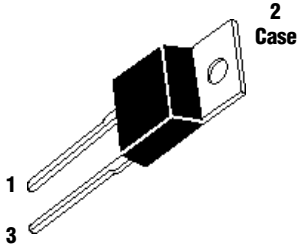


10 Amp High Voltage SCHOTTKY BARRIER RECTIFIERS

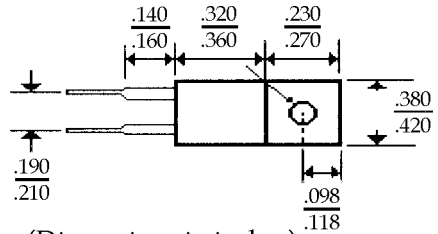
SR1060~SR10100

Description



Mechanical Dimensions

JEDEC
T0-220AC



(Dimensions in inches)

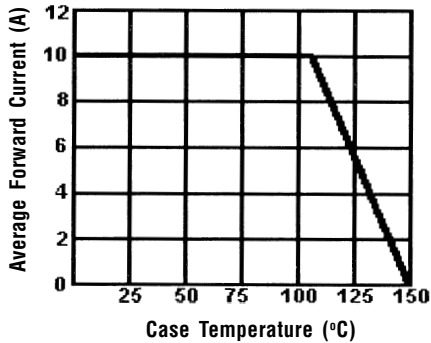
Features

- HIGH CURRENT CAPABILITY WITH LOW V_F
- SUPERIOR METAL PROCESS
- HIGH SURGE VOLTAGE AND TRANSIENT PROTECTION
- MEETS UL SPECIFICATION 94V-0

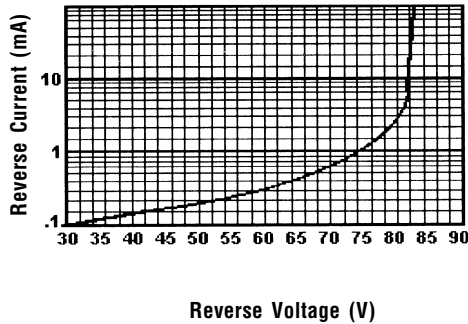
SR1060~SR10100 Series						Units
Maximum Ratings	SR1060	SR1070	SR1080	SR1090	SR10100	
Peak Repetitive Reverse Voltage... V_{RRM}	60	70	80	90	100	Volts
Working Peak Reverse Voltage... V_{RWM}	60	70	80	90	100	Volts
DC Blocking Voltage... V_{DC}	60	70	80	90	100	Volts
Average Forward Rectified Current... $I_{F(av)}$ @ $T_C = 104^\circ C$	10					Amps
Repetitive Peak Forward Surge Current... I_{FM} 20kHz Square Wave	20					Amps
Non-Repetitive Peak Forward Surge Current... I_{FSM} @ Rated Load Conditions, 8.3ms, 1/2 Sine Wave	150					Amps
Repetitive Peak Reverse Surge Current... I_{RSM}	0.5					Amps
Operating Temperature Range... T_J	-65 to 150					$^\circ C$
Storage Temperature Range... T_{STRG}	-65 to 175					$^\circ C$
Electrical Characteristics						
Maximum Forward Voltage... V_F @ $I_F = 10$ Amps $T_C = 25^\circ C$.80					Volts
@ $I_F = 10$ Amps $T_C = 125^\circ C$.70					Volts
Maximum DC Reverse Current... I_R @ Rated DC Blocking Voltage $T_C = 25^\circ C$	2.0					mAmps
$T_C = 125^\circ C$	35					mAmps
Maximum Thermal Resistance... $R_{\theta JC}$	2					$^\circ C / W$

10 Amp High Voltage SCHOTTKY BARRIER RECTIFIERS

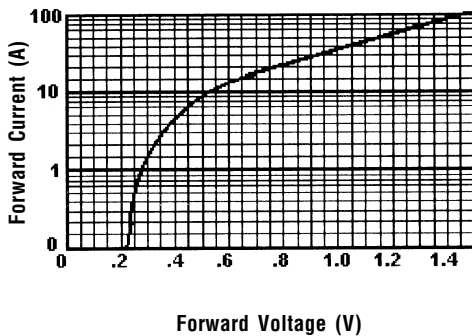
Forward Current Derating Curve



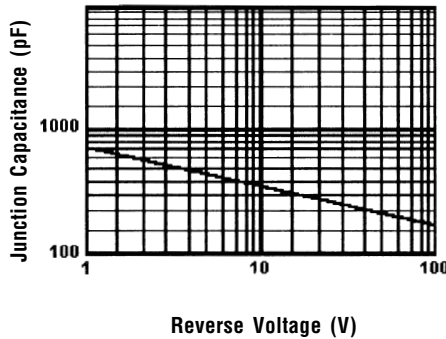
Typical Reverse Characteristics



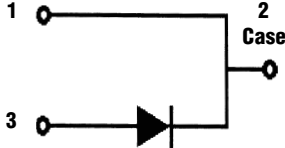
Typical Forward Characteristics



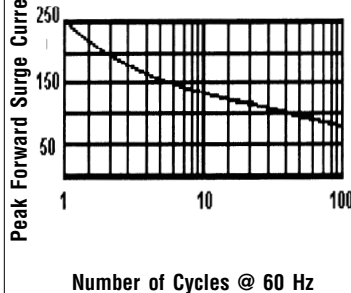
Typical Junction Capacitance



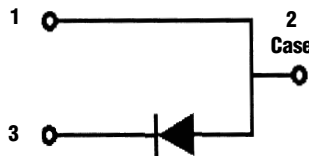
Case Cathode, No Suffix Required



Non-Repetitive Peak Forward Surge Current



Case Anode, Use Suffix "R"



Ratings at 25 Deg. C ambient temperature unless otherwise specified.

Single Phase Half Wave, 60 Hz Resistive or Inductive Load.

For Capacitive Load, Derate Current by 20%.