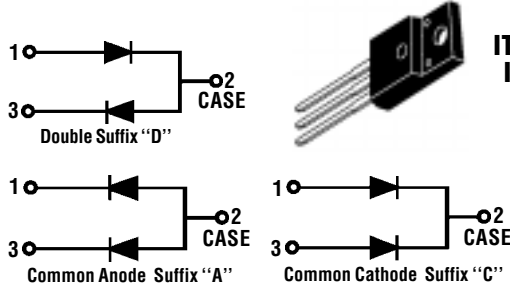




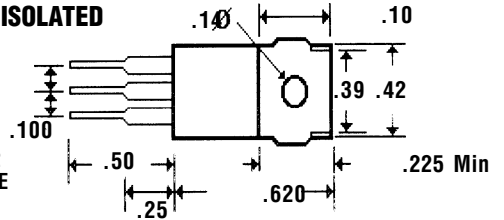
UFF10C20 . . . 60 Series

Description



Mechanical Dimensions

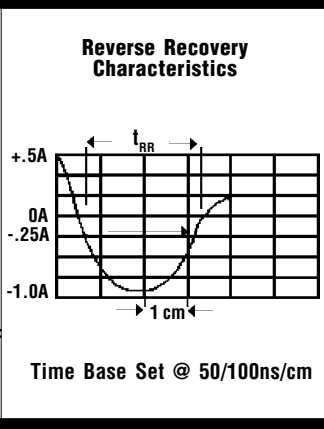
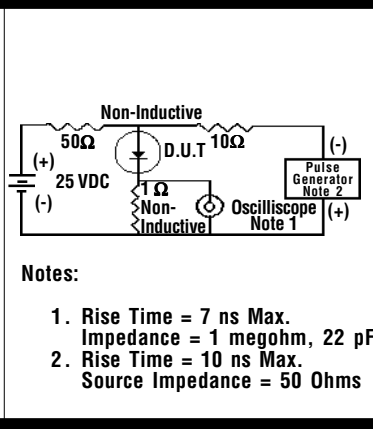
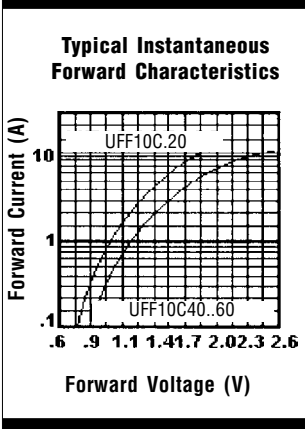
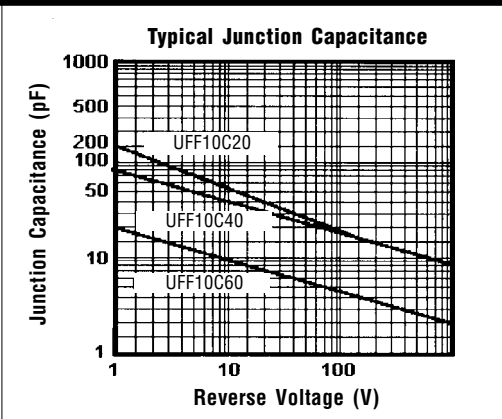
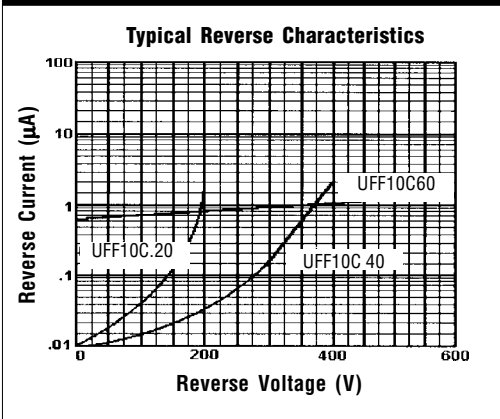
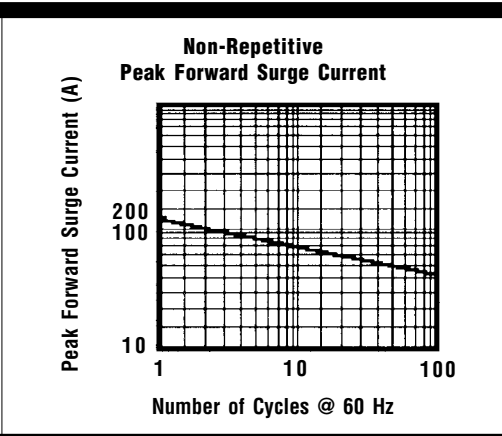
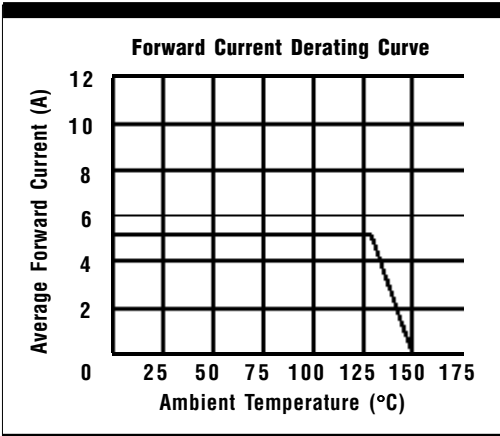
JEDEC
ITO-220AB
ISOLATED



Features

- LOW FORWARD VOLTAGE
- HIGH SURGE CAPABILITY
- SUPERFAST RECOVERY TIME
- MEETS UL SPECIFICATION 94V-0

	UFF10C20 . . . 60 Series			Units	
Maximum Ratings	200	400	600		
Peak Repetitive Reverse Voltage... V_{RRM}	200	400	600	Volts	
Working Peak Reverse Voltage... V_{RWM}	200	400	500	Volts	
DC Blocking Voltage... V_{DC}	200	400	500	Volts	
RMS Reverse Voltage... $V_{R(rms)}$	140	280	420	Volts	
Average Forward Rectified Current... $I_{F(av)}$ (Per Leg) $T_C = 150^\circ\text{C}$ @ Rated V_{DC} (Total)		5 10		Amps Amps	
Repetitive Peak Forward Surge Current... I_{FM} @ Rated V_{DC} , Square Wave, 20 kHz, $T_C = 150^\circ\text{C}$		10		Amps	
Non-Repetitive Peak Forward Surge Current... I_{FSM} @ Rated Load Cond., 1/2 Wave, Single Phase, 60Hz		150		Amps	
Operating & Storage Temperature Range... T_J, T_{STRG}		-50 to 150		°C	
Electrical Characteristics, Per Diode Leg					
Maximum Forward Voltage... V_F @ $I_F = 5$ Amps, PW = 300 μ s $T_C = 25^\circ\text{C}$.975	1.3	1.7	Volts
Maximum DC Reverse Current... I_R @ Rated DC Blocking Voltage $T_C = 125^\circ\text{C}$ $T_C = 25^\circ\text{C}$			500 10	μ Amps μ Amps	
Maximum Reverse Recovery Time... t_{RR} $I_F = 0.5$ Amp, $I_R = 1$ A, $I_{rr} = 0.25$ A		<.....35.....><...50...>		ns	



Ratings at 25 Deg. C ambient temperature unless otherwise specified.

Single Phase Half Wave, 60 Hz Resistive or Inductive Load.

For Capacitive Load, Derate Current by 20%.