

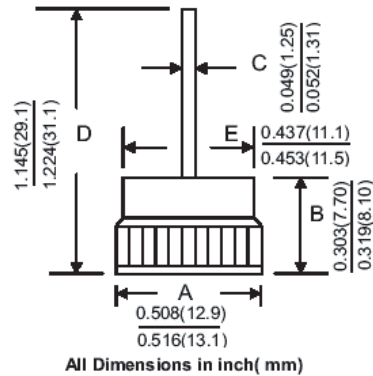
PBFR3501~3506P/N

DESCRIPTION



BOSCH TYPE PRESS-FIT

MECHANICAL DIMENSIONS



Features

- Low Cost
- Super Cool
- Long life Features
- High Current Capability

NOTE:

- 1.PBFR350XP Positive(Forward),(+) Cathode To Case, Color Code Red
- 2.PBFR350XN Negative(Reverse),(-) Anode To Case,Color Code Black

| Electrical Characteristics@25C | Symbol | PBFR3501P PBFR3501N | PBFR3502P PBFR3502N | PBFR3504P PBFR3504N | PBFR3506P PBFR3506N | Unit |
|--|------------------------------------|------------------------|------------------------|------------------------|------------------------|-------|
| Average Forward Current, I _o at T _c =150C 60HZ, Resistive Or Inductive Load | I _F | 35 | | | | A(DC) |
| Peak Reverse Voltage, Repetitive:VRRM | VRRM | 100 | 200 | 400 | 600 | V(DC) |
| DC Reverse Voltage, VR | V(DC) | 100 | 200 | 400 | 600 | |
| Maximum RMS Voltage | VRMS | 70 | 140 | 280 | 420 | |
| Max. Inst Forward Voltage Drop. VF at 80Amp | VF | 1.18 | | | | V |
| Peak Forward Surge Current, IFM(surge): 8.3ms. Single Half Sine-Wave Superimposed On Rated Load (JEDEC method) | IFSM | 400 | | | | A |
| Maximum Reverse Current IR At Rated DC Reverse Voltage. TC= 25C | IR | 10 | | | | uA |
| Maximum Reverse Current IR At Rated DC Reverse Voltage. TC=100C | IR | 500 | | | | uA |
| Maximum Thermal Resistance, Junction To Case (single side cooled) | R _{θJA} | 1.2 | | | | C/W |
| Operating And Storage Temperature Range | T _j ; T _{strg} | -65 to +175 | | | | C |